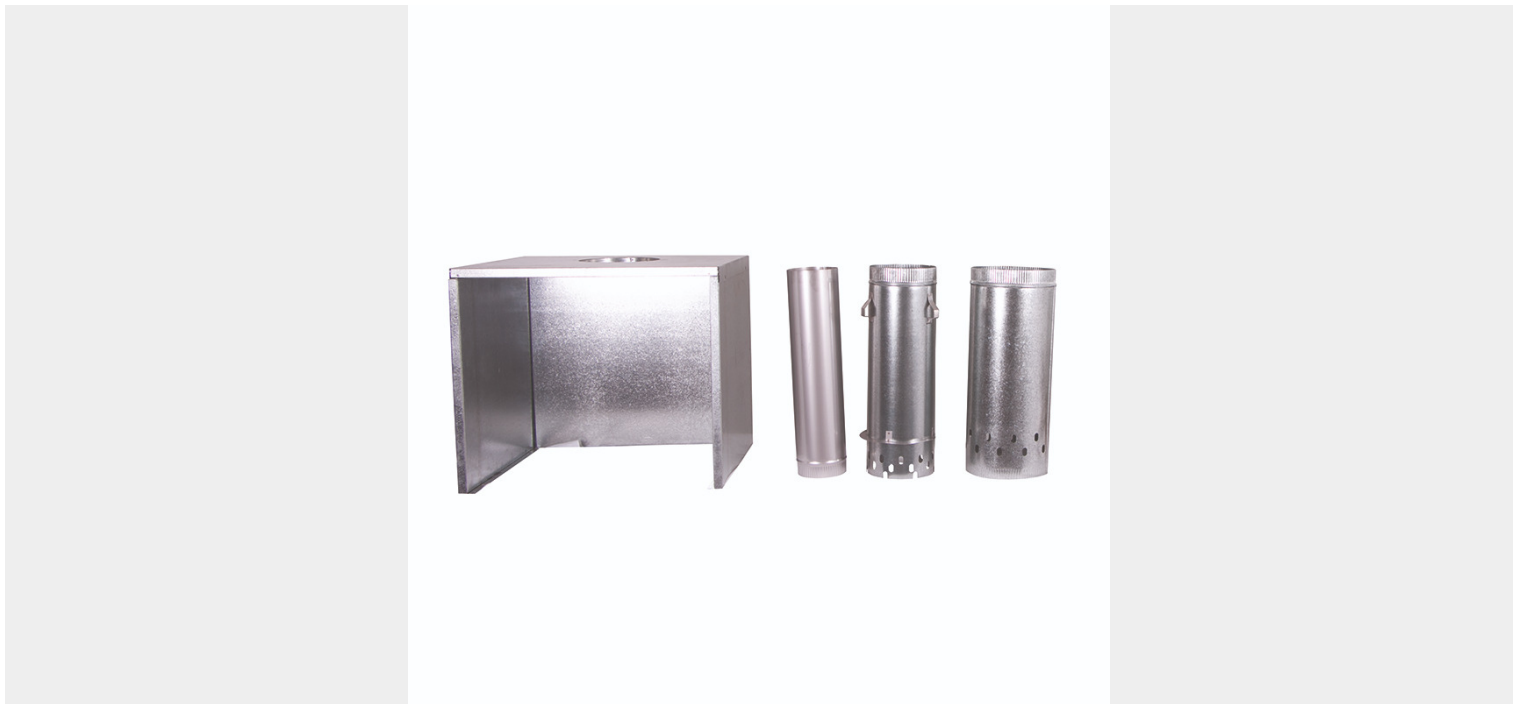


KENT[®]

wood fires & heating

KENT RATA/ LOGFIRE II ZERO CLEARANCE BOX INC 600MM TRANSITION PIECE



\$1,249.00

SKU: KWF298-7371 | **Categories:** [Accessories](#) |

PRODUCT DESCRIPTION

For the installation of any Kent inbuilt fire in a timber constructed void, it is essential to use the Kent approved zero clearance box along with ventilated flue starter transition pieces. This ensures proper and safe installation of the fire unit. Flue kit not included.

ADDITIONAL INFORMATION

Weight	0.2928 kg
Fireplace Model	Logfire II Inbuilt, Rata Inbuilt
Part Type	Flue Systems, Flue Components